

DEDICATED TO BRINGING BIRCH BACK FOR FUTURE GENERATIONS



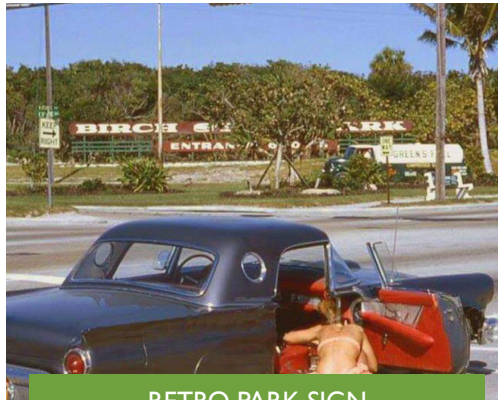
Birch Bulletin

OCTOBER | NOVEMBER 2020

2021 Projected Park Projects



PERIMETER FENCE



RETRO PARK SIGN



TRESTLE WALKWAY AND GAZEBO



Every ten years, each park in the Florida State Park Service works on a Unit Management Plan. The Plan serves as a guide to make sure the most important projects are at the top of the “to do” list. It’s what makes the state parks in Florida some of the best in the United States.

Our Park Manager, Kyle Easley, when asked about the priority projects for 2021 and beyond, gave us the following:

- Build walkway and gazebo on Long Lake trestle connecting trails;
- Replace perimeter fence for safety and aesthetic purposes;
- Reintroduce retro Park sign at corner of A1A and East Sunrise Boulevard for both directional and marketing purposes;
- Replace degraded South Playground with ADA compliant equipment.

We look forward to helping make these projects happen in 2021 and beyond.

Jim Ellis Honored as 2020 Downtowner of the Year

The Downtown Council of the Greater Fort Lauderdale Chamber honored our long-time Friends’ board president for his contributions to the community and especially his involvement in the development of the Downtown and Flagler village.

While the event was held on Zoom rather than in a large room filled with people, the Chamber did a great job making it interesting and fun. We showed a video depicting Jim’s life - both work and personal – that explained what made Jim the dedicated, over-achiever he is. He makes any project he focuses on better. His tireless community involvement includes chairing the boards of the Friends of Birch State Park, Riverwalk, the Downtown Development Authority, and, in past years, the Museum of Discovery and Science.

Congratulations Jim - well deserved!



Jim Ellis, Ellis Diversified, Inc. and Friends past board president



**FRIENDS OF
BIRCH STATE PARK, INC.**

Executive Committee

PRESIDENT

Christine Madsen

PAST PRESIDENT

Jim Ellis

VICE-PRESIDENT

Ashley Sawyer Smith

SECRETARY

Tyler Chappell

TREASURER

Tom Byrne

AT LARGE

Stephen Botek
Allen Zeman

Board of Directors

Dan Barnett

John Barranco

Heather P. Brinkworth

Andrew Caldwell

Lilia Ciciolla

Mark Corbett

Patrick Daoud

Lisa Davis

Laura Elmore

Peggy Olin

Heather Geronemus

Katherine Koenig

Ina Lee

Dan Lindblade

John Magee

Whitt Markum

Mari Mennel-Bell

Dawn Read

Robert Roselli

Julie Saumsiegle

Shea Smith

Nancy Thies

Steve Tilbrook

William Walker

Paul Weinberg

HONORARY COUNCIL

Joe & Wini Amatore

Dr. George Hanbury

Dominick Miniaci

Carlos Suarez

Phil Thornburg

EXECUTIVE DIRECTOR

Gale M. Butler

GButler@BirchStatePark.org

954-566-0660

DIRECTOR OF MEMBERSHIP AND DEVELOPMENT

Michelle Schmitz

MSchmitz@BirchStatePark.org

We are a 501(c)(3) non-profit organization formed to help preserve, conserve, enhance, and promote Hugh Taylor Birch State Park through community support.

(954) 566-0660
birchstatepark.org



Board President's Message

Well, my last message said that I was taking over as President of the Board at a time when there were some challenges. Little did I know, those challenges paled in comparison to what happened to businesses and non-profits alike for the next six to seven months - and it's not over yet!

Still, I am proud to say the Board continued to meet on Zoom and staff continued to fundraise and move ongoing projects along. Donors continued to support Friends which is on solid footing going into 2021. The Park opened about three weeks before other state parks so the community could enjoy exercising and just being outdoors in nature.

We look forward to a bright future for both Friends and the Park. We hope you will continue to use, enjoy and support the Park and Friends. Remember, it is your Park, Fort Lauderdale's "Central Park" and everyone's breathing space.



Christine Madsen

Friends' Message



Gale Butler

The year 2020 will go down as possibly the strangest year in the Park's history. Covid-19 shut down the country on March 12th, the night before our Camp Birch BBQ (which we cancelled). For the next two months, the Park was closed to visitors. It was all but empty unless you count the iguanas. Park staff worked on renovation projects and the Friends staff focused on grant writing. We wrote 15 grants and letters of application, received funds from two so far, and optimistically look forward to receiving more in the coming months.

We thank our members and friends for their patience and loyalty during this time and we hope everyone remained safe and well. Remember, we are here Monday through Friday and would love to give you, your family or visiting friends an in-person or virtual tour of the Park. We have lots of finished projects and several upcoming projects to tell you about. Just call 954-566-0660.

Gale Butler, Executive Director

Michelle Schmitz, Development Director



Michelle Schmitz

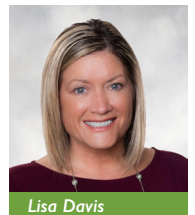
Friends Welcomes Lisa Davis to Board



**JM Family
Enterprises**

Lisa Davis is Manager of Community Impact for JM Family Enterprises, Inc. and has been with JM for the past 15 years. Originally from southern New Jersey, Lisa started her professional career developing and managing the volunteer program at the New Jersey State Aquarium in Camden, New Jersey. After seven years with the Aquarium, Lisa moved to South Florida and joined JM Family. She is a member of both the Kiwanis and Rotary Clubs, and works to make a difference in the South Florida community. Lisa is also an active volunteer at her daughter Waverly's school, Deerfield Beach Middle.

We welcome Lisa to the board of directors. Not only is she a sponsor of our upcoming Garden Party, but she has already volunteered to join the planning committee for the Camp Birch BBQ Family Day on Saturday, April 17.



Lisa Davis

Stephan Celebration Pergola

Ted Stephan, long-time Fort Lauderdale resident and early developer and financier, discovered Fort Lauderdale on Spring Break

with the Ohio State University swim team. After college, he moved here, raised his family and enjoyed many family picnics, birthday parties and troop outings in Birch Park. His daughter, Lara, called us recently to say that her father wanted to name something in the Park that people would use and enjoy. To show Ted what the Park looks like now, we grabbed a cell phone and via golf cart made a video tour of the Park. We sent it to Ted in Arizona and, after viewing it, he chose to name the Pergola. It is now the "Stephan Celebration Pergola" in Marti's Meditation Garden.

A fun fact about Ted Stephan is that prior to becoming a developer, he worked as a dance instructor for Arthur Murray's Studios and as a model in iconic beach resort brochures.



Retro Ad for Lago Mar Beach Club: Model Ted Stephan



Retro Ad for Yankee Clipper Hotel (now named B Ocean): Model Ted Stephan

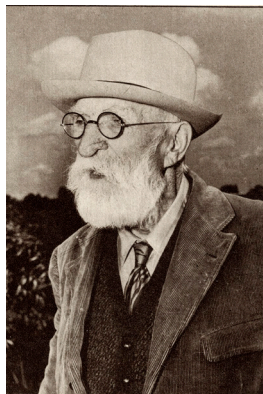


Ted Stephan Pergola

The Vision of Hugh Taylor Birch

Hugh Taylor Birch's love of nature and land made a big difference in the history of Fort Lauderdale. It is what led him to travel to Palm Beach with Henry Flagler when Birch was General Counsel of Standard Oil. It is why he borrowed a sloop from Flagler and travelled down the Florida coast until he was forced in to what is now Bahia Mar Yacht Basin. It is why he began purchasing land for \$1 to \$4 an acre and why we have three-miles of open beach and 180-acres of green space today. By donating three-miles of beach with the stipulation it never be built upon but left open and accessible to the public forever, he gave us our economic engine. What's more, by gifting 180-acres of his estate to the state of Florida to be used as a nature park, he gave Fort Lauderdale its "Central Park". Finally, by giving his daughter, Helen, 35 acres of land on which to build a home when she married Frederic Bartlett, the result is the beautiful Bonnet House Museum and Gardens we love to visit today.

Hugh Taylor Birch had vision and Fort Lauderdale is what it is today, in part, thanks to that vision.



Hugh Taylor Birch at age 93

Thank You! Terramar Society Members

The Terramar Society of the Friends of Birch State Park is the backbone of Friends' operations. We thank these very loyal annual supporters.

Banyan Level - \$5,000

Joe & Wini Amaturio
Jim Ellis & Olya Salehi
Steve & Jeannie Hudson
Ed & Sherry Meehan
Carlos & Lisa Rodriguez
Bill & Anne Scherer
S. Donald Sussman & Michelle Howland

Manatee Level - \$2,000

The Miniaci Family

Sea Turtle Level - \$1,000

John & Summer Barranco
Stephen & Kari Botek
Gale M. Butler
Andrew & Connie Caldwell
Connie Chaney & Al Rothstein
Tyler & Sarah Chappell
Michael & Mary Ellen Coen
Ed Cumisky & Amanda Hunt
Fran Custer
Dorian & Pat Damoorgian
Ted & Kathy Drum
Doug & Jane Eagon
Martin Lesser & Linda Groene
Jon & Elaine Krupnick
Lee McDonald
The Mastriana Family
Mark McGuire & Craig Wilson
Mari Mennel-Bell & Joel Greenbaum
Robert & Jennifer Roselli
Bill & Nancy Thies
E.C. Traver

Marti's Garden Club - \$1,000

Joe & Wini Amaturio
Gale M. Butler
Rick & Rita Case
Michael & Mary Ellen Coen
Dorian & Pat Damoorgian
Ted & Kathy Drum
Jim & Janet Jordan
Lisa Kitei
Monica Maroone
Ed & Sherry Meehan
Mari Mennel-Bell & Joel Greenbaum
Bill & Anne Scherer

Linda Carter Day at the Park

The Community Foundation of Broward held a fun, heartfelt retirement celebration for Linda Carter, Foundation president for the past 23 years. It was held in Hugh Taylor Birch state Park and included a bench dedicated to Linda for her service to the Foundation and the community, a surprise car parade, and a small reception outside with Foundation staff on the lawn of Terramar over looking the Ocean. The Friends of Birch State Park was delighted to host the event that launched Linda on her next adventure and we wish Jennifer O'Flannery Anderson all the best going forward!



Left to right (top): Jennifer O'Flannery Anderson, Carol Dorko, Kirk Englehardt, Nancy Thies, Sheri Brown, James Donnelly; (top) Lina and Michael Carter



Steve Hudson, Community Foundation Board Member with Linda Carter cutout.



Community Foundation staff, board and fans held a parade honoring Linda Carter

Upcoming Events

GARDEN PARTY: NOVEMBER 13, 2020

The Garden Party will be held on Friday, November 13 from 4-6pm outside on the lawn of Terramar in an open air tent overlooking the ocean. We will have music, cocktails and hors d'oeuvres, live and silent auctions and complimentary parking. Attire is garden party casual. Come to enjoy friends in a lovely setting. We thank presenting sponsor UKG - Ultimate Kronos Group and The Hudson Family Foundation, JM Family Enterprises, EDI, Inc., Conrad & Scherer, Rick Case Automotive Group, The Chappell Group and One World Properties.



Thank you in advance to our hostesses: Pamela Baynes, Mimi Bauer, Kim Bentley, Nancy Blosser, Ann Burris, Barbara Castell, Diane Courtney, Fran Custer, Dawn Read Diehl, Laura Elmore, Heather Geronemus, Alice Jackson, Janet Jordan, Lisa Kitei, Michelle Howland, Meghan Leckey, Chris Madsen, Mari Mennel-Bell, Ginny Miller, Peggy Olin, Ashley Sawyer Smith, Jamie Stiles, and Nancy Thies.

BIRDIES FOR BIRCH: MARCH 15, 2021

Our annual golf tournament, Birdies for Birch, will be held on Monday, March 15 beginning with



Co-chairs Stephen Botek and Whitt Markum with Committee Member Andy Caldwell (left).

registration at noon followed by a shotgun start at 1pm, box lunch

on the carts, fun special event holes and a reception with cocktails and heavy hors d'oeuvres. Foursome \$1200. Location: Fort Lauderdale Country Club.



CAMP BIRCH BBQ FAMILY DAY: SATURDAY, APRIL 17, 2021

We are planning our first-ever family day in the park. It will take place from 11am until 3pm in the Elks Youth Camp with a bounce house, pony rides, a rubber tire train to take the children around the park's loop road and more! There will be music, a BBQ and plenty of games for adults and children alike.



Trackless Train for Camp Birch BBQ Family Day