

# Friends of Birch State Park Hold Events To Continue Efforts to Enhance the Park



(seated, left to right) Presenting sponsor Lorraine Thomas, Mary Riedel, Wini and Joe Amatore; (standing, left to right): Stacy Weisman, Karola Woodworth, Chip and Eileen LaMarca and Diana Metcalf



The hostess team for "A Garden Party" included (front row, left to right) Heather Geronemus, Tracy Dunn, Peggy Olin Fucci, Meghan Leckey, Nancy Thies, Janet Jordan (back row, left to right) Ashley Sawyer Smith, Dawn Read, Alice Jackson, Julie Saumsiegle and Jane Davis

The Friends of Birch State Park recently hosted "A Garden Party" at the Sonesta Fort Lauderdale Beach in its Infinity Ballroom overlooking Hugh Taylor Birch State Park. This year's event raised funds to support the Friends of Birch State Park and its continued efforts to enhance the park. Proceeds raised were matched dollar for dollar up to \$50,000 by Friends of Birch State Park board chair Jim Ellis of Ellis Diversified, Inc.

The Hostess Committee included: Tracy Dunn, Peggy Olin Fucci, Heather

Geronemus, Alice Jackson, Janet Jordan, Meghan Leckey, Dawn Read, Julie Saumsiegle, Ashley Sawyer Smith, Jane Smith, Nancy Thies and Lorraine Thomas. Gordon Latz served as auctioneer.

Lorraine Thomas was the presenting sponsor of this year's event. Additional sponsors included Ellis Diversified, Inc.; ACURE; The Las Olas Company; Morgan Stanley; Ultimate Software; One World Properties; LaCroix; Moss Construction; Bank of America; and Daoud's Fine Jewelry.

Representing event sponsors are (left to right) Lisa Frucht of Daoud's Fine Jewelry, Lilia Ciciolla of Bank of America, Peggy Olin Fucci of One World Properties, Heather Geronemus of Ultimate Software and Julie Saumsiegle of Morgan Stanley



**Publisher/Editor**  
Gloria Y. Jacaruso

**Contributing Editor**  
Betty Williams

**Advertising Account Executive**  
Mary Jo Rogers

**Creative Director/Graphic Designers**  
Marta M. Tejera  
Susan K. Loden

**Photographer**  
Caroline Hejja

**South Florida Social** is published monthly during the high social season by:  
**South Florida Social Publishing, Inc.**  
3032 E. Commercial Blvd., #21  
Fort Lauderdale, FL 33308

You may also view the entire paper and annual social calendar at:  
[www.southfloridasocial.com](http://www.southfloridasocial.com)

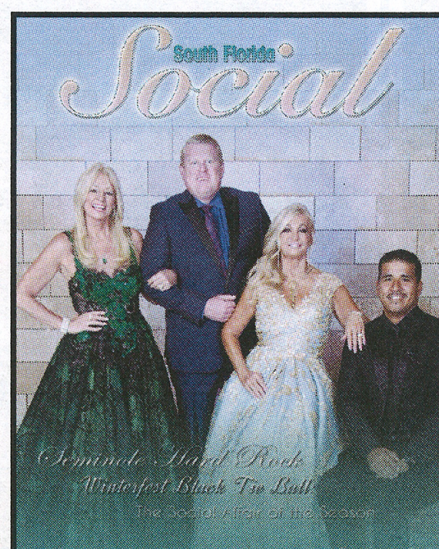
For editorial or advertising, call: 954.781.1790  
or email: [Sfloridasocial@gmail.com](mailto:Sfloridasocial@gmail.com)

**South Florida Social Inc.** accepts no liability for the accuracy of statements made by outside contributors, third party articles or advertisers. We welcome your press releases and photographs. Material submitted become the property of **South Florida Social**.

**Copyright:** 2018 South Florida Social Inc. No part of this publication may be reproduced without the written permission of South Florida Social Publishing, Inc.

## Contents

Calendar of Events .....	6
Betty's Blog .....	7
Winterfest .....	8
Royal Dames of Cancer Research Tiara Ball .....	11
Special Olympics .....	12



## On The Cover

From Left to Right:

JP Villanueva, Ford; Lisa Scott-Founds, Winterfest, Inc.; David Boothe, Republic National Distributing Co.; Susan Renneisen, Seminole Hard Rock.

See page 8

Photo by Ginny Fujino  
Gowns by Zola Keller  
Jewelry by Carroll's

